



SMALL GROUP OVERLAND TOURS

IN PARTNERSHIP WITH

NOMAD
AFRICA
TOURS & SAFARIS



Alex Rutherford Owner

Alex Rutherford, founder and owner of Nomad. In 1997 he conducted a trans-African expedition that lasted almost a year. On that journey Nomad was born. See you on the road...



Henk De Kock Director

Henk has 23 years of service with the company, from an initial position as a Driver, then moving on to roles such as Tour Leader, Operations and Workshop Manager, General Manager, and finally, Director.



Christina Du Plessis Director

Over 14 years of service, Christina has progressed from leading teams as Reservations Manager; Head of Product and Special Projects; Sales; Assistant General Manager and now Director.



Goretti Van Wieringen Manager

With 16 years of dedicated service, Goretti's career journey has taken her from a Bookkeeper role to Accounts Manager and ultimately, Finance Manager.



Mark Fletcher Manager

Mark has been with the company for over 13 years, progressing from Operations to Workshop roles before becoming Nomad's Operations and Workshop Manager.



Anneliese Korsch Manager

In 17 years of service, Anna's career path has evolved from Reservations to International Sales, culminating in her current role as Agent Relations Manager.



Cameron Appel Manager

Cam has been with Nomad for 2 years and has over 20 years experience in tourism and marketing. Starting as a safari guide, then advertising, now as Online and Marketing Manager.

OUR TOP 3 CREW

Get ready to meet the Dream Team of the Year—the rockstar guides, culinary wizards, and wheelmasters who are the pulsing heartbeat of Nomad! They're not just ensuring your journey is top-notch; they're elevating your travel experience to epic heights you never imagined!



Calisto Muvata

Gabriel Kunda

Norman Lova

OUR TRIBE



TAILORMADE & PRODUCT



SALES & RESERVATIONS



OPERATIONS & WORKSHOP



Our first truck Janis on her first tour in 1997

ABOUT NOMAD

| | |
|-------------------------|---|
| Our Tribe | 2 |
| Why Nomad? | 4 |
| Your Travel Style | 5 |
| Your Vehicle Experience | 6 |
| Where We Sleep | 7 |

OUR TOURS

| | |
|-----------------------------|----|
| Scheduled Tours Overview | 8 |
| Cape Town to Victoria Falls | 10 |
| South African Explorer | 12 |
| Kruger & Mozambique | 14 |
| Okavango & Chobe Trail | 16 |
| Namibian Explorer | 17 |
| Best Of Zimbabwe | 18 |
| The Kruger Big 5 | 19 |
| Victoria Falls to Nairobi | 20 |
| Masai Mara & Gorillas | 22 |
| Best Of Africa | 24 |
| Southern Circle | 26 |

WHY NOMAD?

**26 YEARS OF SPECIALISING IN AUTHENTIC AFRICAN TRAVEL. TO DATE
OVER 170 000 CLIENTS HAVE TRAVELLED OVER 50 MILLION KILOMETERS
ACROSS 12 DIFFERENT COUNTRIES SINCE OUR FIRST TOUR IN 1997.**



MOZAMBIQUE



ZIMBABWE



BOTSWANA



NAMIBIA



LESOTHO



ESWATINI

With unparalleled expertise in Africa, we meticulously plan your vacation to optimize your experience of this magnificent continent. Over the years, we've honed our services, upgraded our vehicles, and invested in rigorous staff training and equipment maintenance. As a result, we're confident that our custom tours are unparalleled in Africa.

Nomad Africa is a locally-owned and operated industry leader in a range of tour offerings, including camping, accommodated stays, small group tours, FIT, self-drive, and private excursions. Our scope spans Southern and Eastern Africa, providing you with an extensive range of bucketlist destinations to choose from.

Our purpose-built trucks and safari vehicles, operated by seasoned local crew, make your journey both comfortable and safe. With 26 years of experience, Nomad strikes the perfect balance: we're large enough to be reliable, yet small enough to offer personalised care.

Beyond just the high-profile attractions, we provide a window into the authentic Africa. You'll have opportunities to interact with locals, visit hidden gems, and travel securely to the most incredible spots—all while enjoying a seamless, hassle-free journey. In essence, we don't just take you to Africa; we are Africa.

- ✓ 100% AFRICAN OWNED
- ✓ 26 YEARS IN OPERATION
- ✓ 136 SCHEDULED TOUR OPTIONS
- ✓ SMALL GROUP TRAVEL
- ✓ LARGEST TOUR PORTFOLIO
- ✓ INCLUSIVE MEALS & ACTIVITIES
- ✓ 10% RETURN CLIENT DISCOUNT
- ✓ BUDGET TO HIGH END CUSTOM SAFARIS
- ✓ NO HIDDEN COSTS
- ✓ EXPERIENCED GUIDES & CREW

4

3

4

YOUR TRAVEL STYLE

TAILORMADE SAFARIS

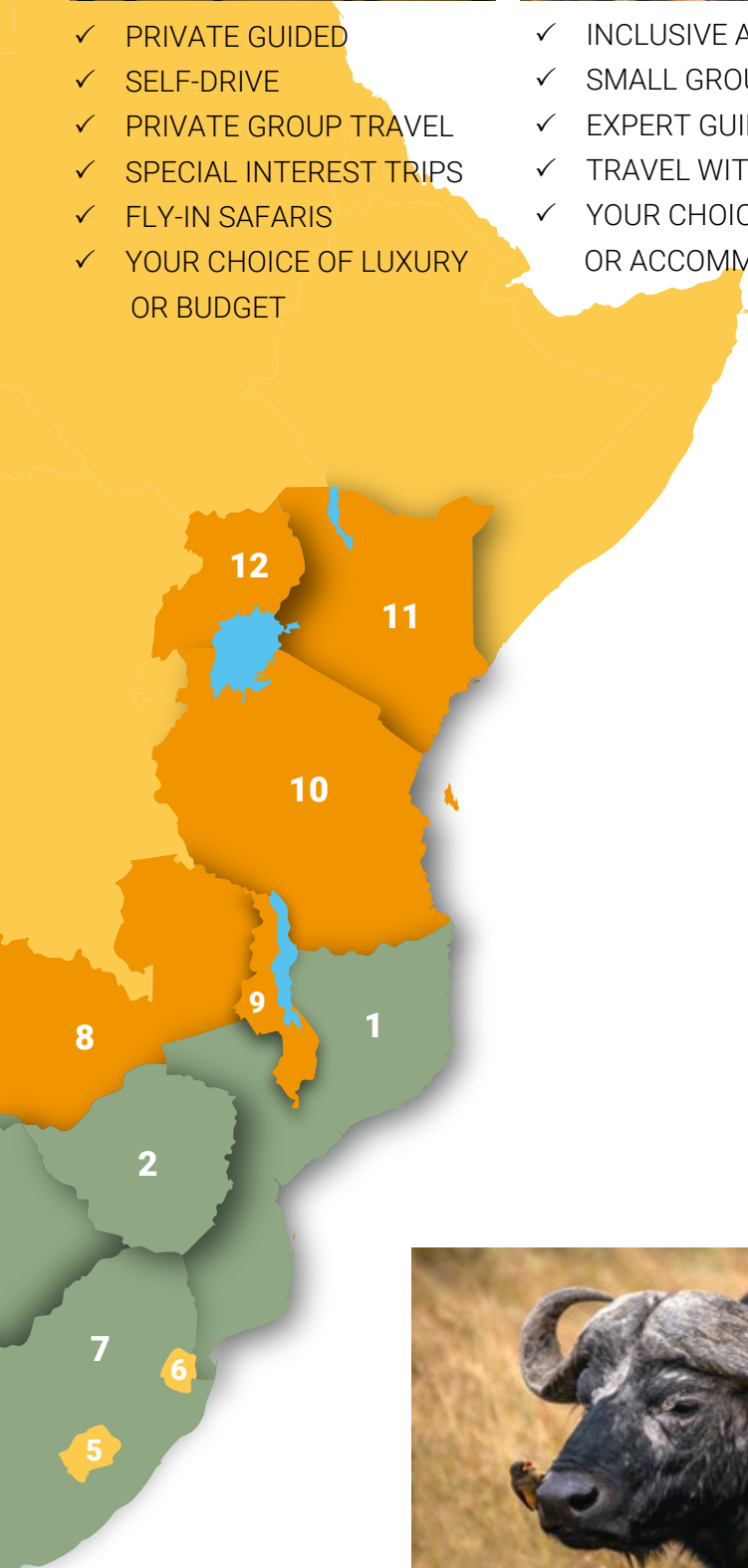


- ✓ PRIVATE GUIDED
- ✓ SELF-DRIVE
- ✓ PRIVATE GROUP TRAVEL
- ✓ SPECIAL INTEREST TRIPS
- ✓ FLY-IN SAFARIS
- ✓ YOUR CHOICE OF LUXURY OR BUDGET

SCHEDULED GROUP TOURS



- ✓ INCLUSIVE ACTIVITIES
- ✓ SMALL GROUP OPTIONS
- ✓ EXPERT GUIDES & CREW
- ✓ TRAVEL WITH PURPOSE
- ✓ YOUR CHOICE OF CAMPING OR ACCOMMODATED



12

UGANDA



11

KENYA



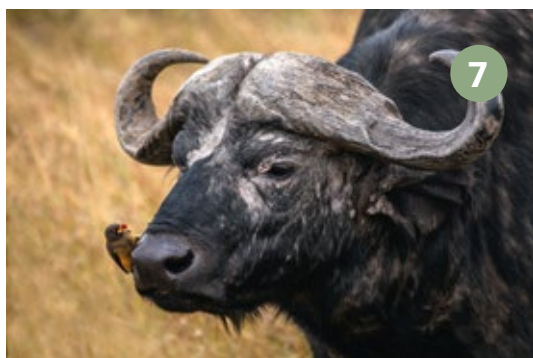
10

TANZANIA



9

MALAWI



7

SOUTH AFRICA



8

ZAMBIA

YOUR VEHICLE EXPERIENCE

Nomad makes use of a selection of transport options during our tours, ranging from our custom built trucks (12 or 20 seaters) for the majority of the cross country travel days, as well as a combination of open 4x4 safaris vehicles & minibuses for certain activities and/or transfers.

20 SEATER

Our scheduled tour trucks have 20 seats and additional packing space for camping equipment. Ideal for small or large groups, we also have a club area, providing an additional 4 seats, ideal for playing cards or socialising.

VEHICLE FEATURES

- ✓ Overhead Luggage Racks
- ✓ USB Ports For Charging Devices
- ✓ Large Dropdown Tinted Windows
- ✓ Window Shading
- ✓ Lockers Space (+35cm square, 80cm deep)



12 SEATER

These vehicles have been designed with the more discerned traveller in mind and provides additional value added features. We offer ample leg room in this 12 Seater, with air-conditioning and an on-board toilet for emergencies

VEHICLE FEATURES

- ✓ Reclining Swivel Leather Seats
- ✓ Air-conditioning
- ✓ Large Dropdown Sliding Windows
- ✓ On-board Toilet For Emergencies
- ✓ Lockers (30x60x80cm)
- ✓ Individual Lights, USB Ports & Individual Safes



SAFARI VEHICLE

These include the standard open sided 4x4 vehicles, as well as safari mini vans with pop up rooves. Vehicle selection is based on the enhancement of your safari or game driving experience.

VEHICLE FEATURES

- ✓ Pop-up Roof or Open Sides
- ✓ 4 Wheel Drive
- ✓ Comfortable Seating
- ✓ Able To Traverse Rugged Terrain





QUANTUM OR SPRINTER

The Quantum is ideal for 2 to 11 clients, where as the Sprinter is suited more for 2 to 20 clients. Both these semi-lux vehicles can come with or without a trailer. Comfortable seats and air conditioning are standard.



20 OR 30+ SEATER COACH

The 20 seaters are available in semi or full luxury and include on board toilets. The 30+ seaters are available in full luxury models and feature on board toilets and reclining seats.

WHERE WE SLEEP

Tailormade tours allow clients the freedom to select their preferred style of lodging and express their tastes. Nomad invites all clients to explore the variety of accommodation options available, ranging from traditional huts and permanent tents to guesthouses, boutique hotels, and lodges.

For those on scheduled tours, clients can choose to either camp in our supplied dome tents (measuring 2.4x2.4m) with a 5cm-thick mattress, bringing their own sleeping bag, or they can choose our accommodated option where a selection of permanent tents, guesthouses, lodges, and hotels are provided.

CAMPING WITH DOME TENTS



PERMANENT TENTED ACCOMMODATION



LODGES & GUESTHOUSES

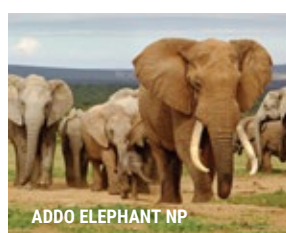
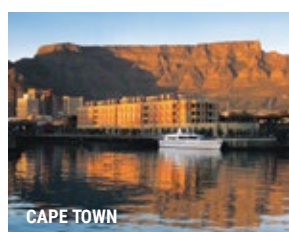


HOTELS & RESORTS



A Scheduled Group Tour offers the enriching opportunity to forge new friendships with people from across the globe. Our carefully curated tours follow a set itinerary along a pre-determined route, featuring north and southbound departures, across 12 countries with 136 different tours to choose from.

A Scheduled Group Tour offers the enriching opportunity to forge new friendships with people from across the globe. Our carefully curated tours follow a set itinerary along a pre-determined route, featuring north and southbound departures, across 12 countries with 136 different tours to choose from.



CHOOSE YOUR ROUTE & DURATION

Our core routes are indicated on the map numbered 1-9. These form the main routes, but within them are multiple sub routes for those unable to travel for a long duration. Travellers are welcome to join us from the indicated start points, but we also offer pick up and drop off points at all major cities on route.

| | MAP NR | CORE ROUTES | | 20 SEATER STANDARD CAMPING/ACCOMMODATED | 12 SEATER SMALL GROUP ACCOMMODATED | NORTH/SOUTH | DEPARTURE |
|-----------------|--------|---|---------------|---|------------------------------------|-------------|------------|
| SOUTHERN AFRICA | 1 | CAPE TOWN TO VICTORIA FALLS South Africa, Namibia, Botswana, Zimbabwe | PAGE 10 | ✓ | ✓ | N/S | WEEKLY |
| | 2 | SOUTH AFRICAN EXPLORER South Africa, Lesotho, Eswatini | PAGE 12 | ✓ | ✓ | S | BI-MONTHLY |
| | 3 | KRUGER & MOZAMBIQUE South Africa, Eswatini, Mozambique | PAGE 14 | ✓ | - | - | MONTHLY |
| | 4 | OKAVANGO & CHOBE TRAIL South Africa, Botswana, Zimbabwe | PAGE 16 | ✓ | - | N/S | BI-MONTHLY |
| | 5 | NAMIBIAN EXPLORER Namibia | PAGE 17 | ✓ | - | - | MONTHLY |
| | 6 | BEST OF ZIMBABWE South Africa, Zimbabwe | PAGE 18 | ✓ | - | S | BI-MONTHLY |
| | 7 | KRUGER BIG-5 South Africa | PAGE 19 | ✓ | - | - | WEEKLY |
| EAST AFRICA | 8 | VICTORIA FALLS TO NAIROBI Zambia, Malawi, Tanzania, Kenya | PAGE 20 | ✓ | - | N/S | BI-MONTHLY |
| | 9 | MASAI MARA & GORILLAS Kenya, Uganda | PAGE 22 | ✓ | - | - | BI-MONTHLY |
| COMBO ROUTES | | COMBO ROUTES: Combination of various routes in Southern & East Africa | PAGES 24 & 26 | ✓ | - | N/S | MONTHLY |

GROUP STYLE

STANDARD 20 SEATER



Camping

Have the freedom to build your own home. An easy to erect 2.4x2.4m heavy duty canvas tent with flexible supporting poles, a fly sheet for rainy weather, built in mosquito nets & a sleeping mattress (5cm thickness) promises a truly African experience.

Min/Max people: 4/20
2 Tour Crew Per Tour



Accommodated

A comfortable range of lodges, hotels, guesthouses, traditional huts and permanent tents awaits you on your journey. For solo travellers a single supplement is charged should we be unable to pair you up.

Min/Max people: 4/20
2 Tour Crew Per Tour

SMALL GROUP 12 SEATER



Accommodated

For a more private experience, close the gap between large groups and travelling on your own with our small group tours. Offering unique experiences with the 12 seater vehicle in Southern Africa.

Min/Max people: 4/12
2 Tour Crew Per Tour

20 DAYS

CAPE TOWN TO VICTORIA FALLS

DIRECTION: North/Southbound

CODE: N(A)CV (N) or N(A)VC (S)

Embark on our hallmark journey through Southern Africa's wonders. Start amidst the sublime beauty of Africa's finest city, traverse Namibia and Botswana's prized gems, and culminate your adventure witnessing the continent's unrivaled natural spectacle. It's not just a tour, it's a bucket-list escape.

MEALS: Breakfast 19/Lunch 18/Dinner 17

COUNTRIES: South Africa, Namibia, Botswana & Zimbabwe

DEPARTURES: Weekly Tuesdays & Saturdays (Year Round)

| | | | | | | | | | | | |
|-----|-----|-----|-----|-----|-----|-----|-----|-----|-----|-----|-----|
| ✓ | ✓ | ✓ | ✓ | ✓ | ✓ | ✓ | ✓ | ✓ | ✓ | ✓ | ✓ |
| JAN | FEB | MAR | APR | MAY | JUN | JUL | AUG | SEP | OCT | NOV | DEC |

CORE ROUTE HIGHLIGHTS

- ✓ 6 Safari/Nature Drives
- ✓ 6 Nature Walks/Hikes
- ✓ 3 Waterbased Activities
- ✓ 7 Landscape & Scenic Areas
- ✓ 8 National Reserves & Heritage Sites

PRICE FROM:

 **AUD 4,490**

 **AUD 6,920**

 **AUD 7,625**

SINGLE SUPPLEMENTS APPLY



TRAVEL STYLE OPTIONS

CAMPING OR
ACCOMMODATED



20 SEATER

SMALL GROUP
ACCOMMODATED



12 SEATER



| DAY | TOUR | START | END | INCLUDED HIGHLIGHTS |
|-----|---------------------|-------------------|-------------------|--|
| 1 | DESERT EXPLORER | CAPE TOWN | Citrusdal | Beautiful mountain fynbos of the Cederberg region forms the backdrop for our overnight stop. Tonight we will get acquainted while enjoying some South African hospitality. |
| 2 | | Citrusdal | Orange River | Heading towards Namibia, our camp tonight is on the banks of the Orange River. |
| 3 | | Orange River | Fish River Canyon | We explore the longest river in South Africa with an optional canoe trip before heading off for the magnificent desert vistas of the Namib desert. |
| 4 | | Fish River Canyon | Keetmanshoop | Early morning walk along the Fish River Canyon followed by a stop at Quiver Tree Forest and exploring the rock formations of The Giant's Playground. |
| 5 | | Keetmanshoop | Namib Naukluft NP | From the grasslands to the red dunes, the slowly changing landscapes represents the many faces of this desert country. |
| 6 | | Namib Naukluft NP | Namib Naukluft NP | Dune 45 offers us the perfect vantage point to marvel at the desert vista. We take a 4x4 transfer followed by time on foot visiting Sossusvlei and Deadvlei. This afternoon we join a local expert for an educational desert excursion. |
| 7 | | Namib Naukluft NP | Swakopmund | Crossing the Tropic of Capricorn, we continue to the coastal adventure town of Swakopmund. |
| 8 | | Swakopmund | Swakopmund | Take the opportunity to explore the town at leisure or join the range of optional activities on offer. |
| 9 | BEST OF NAMIBIA | SWAKOPMUND | Khorixas | Our exploration of the desert continues with a trip up north, where the hot desert sands meet the cold waves of the Atlantic Ocean and we make a stop at the seal colony at Cape Cross. |
| 10 | | Khorixas | Etosha NP | Today we will explore the Twyfelfontein Rock Engravings and the Petrified Forest with a local guide. We continue to the Etosha National Park where we spend the afternoon exploring the park in the Nomad Truck. |
| 11 | | Etosha NP | Etosha NP | Our second day in Etosha allows for a full day to continue our exploration of the park. |
| 12 | | Etosha NP | Etosha NP | On our third day in Etosha, you will have the morning at leisure. That afternoon you will enjoy a safari on the Nomad truck en-route to your next overnight stop. |
| 13 | | Etosha NP | Divundu | We leave the white sands of Etosha behind and venture towards the Kavango River for our overnight stop in Divundu. |
| 14 | | Divundu | Maun | We enjoy a leisurely boat cruise on the beautiful Kavango River. We then cross the border into Botswana and head towards the gateway to the Okavango Delta. |
| 15 | | Maun | Khwai | This morning, time is made available for an optional scenic flight over the Delta before heading to our overnight base, situated on the doorstep of the Khwai Conservation Area. This afternoon we enjoy a traditional mokoro trip and discover the waterways of the Okavango Delta. |
| 16 | | Khwai | Khwai | Today is a full day game drive in Moremi Game Reserve as we spend most of our day on safari in search of the species that roam the plains. |
| 17 | DELTA & CHOBE TRAIL | Khwai | Nata | Today's journey from Khwai to Nata passes the Botswanan salt pans. The scenic drive from Maun to Nata offers breathtaking landscapes. This afternoon you'll enjoy a Makgadikgadi Pans drive. |
| 18 | | Nata | Kasane | We journey from Kalahari sands of Nata to Kasane we head to explore the Chobe National Park from the river, enjoying a leisurely boat cruise which allows an up close and personal experience. |
| 19 | | Kasane | Victoria Falls | With the memories of our wildlife encounters firmly etched in our minds, we cross the border into Zimbabwe this morning and travel the short distance to Victoria Falls. |
| 20 | | Victoria Falls | VICTORIA FALLS | Visit the awe-inspiring Victoria Falls, where the waters of the mighty Zambezi plummet into a gorge over 100m below and visit the rain forest with its many unique species of fauna and flora. |

SUB TOUR OPTIONS

2
DESERT EXPLORER

7 DAYS
Cape Town or Swakopmund

PRICE FROM:
AUD 1,710
AUD 2,550
AUD 3,170

Code: N(A)CS (N) / N(A)SC (S)

3
BEST OF NAMIBIA

12 DAYS
Cape Town or Windhoek

PRICE FROM:
AUD 2,570
AUD 3,605
AUD 4,220

Code: N(A)CW (N) / N(A)WC (S)

4
DESERT & DELTA

12 DAYS
Swakopmund or Victoria Falls

PRICE FROM:
AUD 3,380
AUD 4,650
AUD 5,150

Code: N(A)SV (N) / N(A)VS (S)

5
DELTA & CHOBE TRAIL

9 DAYS
Windhoek or Victoria Falls

PRICE FROM:
AUD 3,065
AUD 4,005
AUD 4,970

Code: N(A)WV (N) / N(A)VW (S)

19 DAYS SOUTH AFRICAN EXPLORER

DIRECTION: Southbound

CODE: N(A)JC

Explore the pinnacle of South African adventure, augmented by royal visits to Lesotho and Eswatini. Experience a mosaic of vibrant cultures, breathtaking landscapes, and a kaleidoscope of colors. Uncover the diverse wonders and captivating beauty that make the Rainbow Nation a unique and unforgettable destination.

MEALS: Breakfast 18/Lunch 19/Dinner 18

COUNTRIES: South Africa, Eswatini & Lesotho

DEPARTURES: Bi-monthly Sundays (Year round)

| | | | | | | | | | | | |
|-----|-----|-----|-----|-----|-----|-----|-----|-----|-----|-----|-----|
| ✓ | ✓ | ✓ | ✓ | ✓ | ✓ | ✓ | ✓ | ✓ | ✓ | ✓ | ✓ |
| JAN | FEB | MAR | APR | MAY | JUN | JUL | AUG | SEP | OCT | NOV | DEC |



CORE ROUTE HIGHLIGHTS

- ✓ 9 Safari/Nature Drives
- ✓ 5 Nature Walks/Hikes
- ✓ 1 Boat Cruise
- ✓ 6 Landscape & Scenic Areas
- ✓ 8 National Parks & Reserves

PRICE FROM:

 **AUD 3,970**

 **AUD 4,990**

 **AUD 5,845**

SINGLE SUPPLEMENTS APPLY



WANT A PRIVATE GROUP?


Your style – Your Own Pace – Your Group

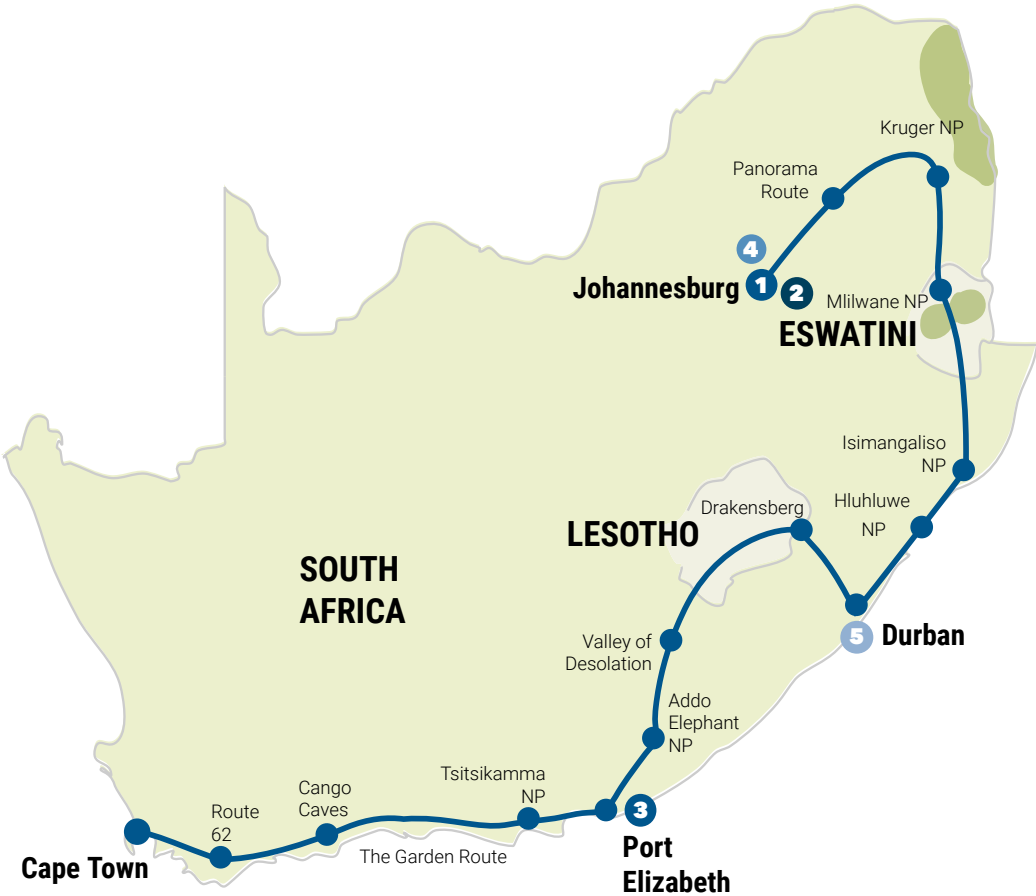
Have you considered a tailor-made group tour. Customised to your preferences

Our 15 Day Accommodated South African Route:

8 Guests PRICE ON REQUEST

24 Guests PRICE ON REQUEST

 info@benchafrica.com.au



TRAVEL STYLE OPTIONS

CAMPING OR
ACCOMMODATED



20 SEATER

SMALL GROUP
ACCOMMODATED



12 SEATER



| DAY | TOUR | START | END | INCLUDED HIGHLIGHTS |
|-----|------------------------------|----------------------|------------------|--|
| 1 | 1 SOUTH AFRICAN EXPLORER | JOHANNESBURG | Kruger NP | Travel through broad valleys and open woodland areas towards Kruger National Park. |
| 2 | | Kruger NP | Kruger NP | A full day on a 4x4 vehicle will take you in search of the Big 5 in Africa's largest National Park. |
| 3 | | Kruger NP | Kruger NP | Explore the beautiful panoramic views and scenic waterfalls of the Blyde River Canyon, Bourke's Luck Potholes and God's Window |
| 4 | | Kruger NP | Mlilwane NP | After an early morning game drive to the gate, we depart for Mlilwane National Park. |
| 5 | | Mlilwane NP | Mlilwane NP | Our guides will lead us on a scenic nature trail giving us indepth history on the area. |
| 6 | | Mlilwane NP | St Lucia | We bid farewell to Eswatini before heading to the heart of the St Lucia Wetland Reserve. |
| 7 | | St Lucia | St Lucia | After a morning 4x4 safari in the Hluhluwe National Park in search of the Big 5, we depart for the St Lucia estuary for an afternoon boatcruise. |
| 8 | 2 KRUGER, ESWATINI & LESOTHO | DURBAN | Drakensberg | Making our way to the towering Drakensberg mountains, we stop to view the cascading waters of Howick Falls as well as the capture site of Nelson Mandela. |
| 9 | | Drakensberg | Drakensberg | Waking up to the dramatic landscape of the Drakensberg Mountains, we have the opportunity to hike with our guide in Ukhahlamba-Drakensberg Park |
| 10 | | Drakensberg | Lesotho | Our journey today begins with a mountain pass as our route winds its way through the magnificent hills and mountains before we enter Lesotho in the afternoon |
| 11 | | Lesotho | Lesotho | The clean air of the mountains accompanies us as we explore the surrounding area on foot and we will set out on the trail for a morning waterfall hike with your Nomad guide for a couple of hours. |
| 12 | | Lesotho | Graaff-Reinet | Driving towards semi-arid lands of the Karoo we view the sheer cliffs and precariously balanced columns of the Valley of Desolation rising 120 metres off the valley floor. |
| 13 | | Graaff-Reinet | Gqeberha (PE) | We pass through the open plains of the Karoo and head to the famous Addo Elephant National Park where we will enjoy an afternoon game drive in our Nomad truck. Our overnight accommodation is in the heart of Gqeberha. |
| 14 | | GQEBERHA (PE) | Gqeberha (PE) | We leave the city of Gqeberha and once again head into Addo Elephant National Park for our game drive. |
| 15 | 3 THE GARDEN ROUTE | Gqeberha (PE) | Tsitsikamma | As we venture towards the Tsitsikamma region, we make a brief visit to the surfing mecca of Jeffreys Bay. |
| 16 | | Tsitsikamma | Tsitsikamma | We explore the rugged coastline of the Tsitsikamma National Park on foot, hiking along the Waterfall trail or the more leisurely option of the boardwalks to the Storms River Mouth. |
| 17 | | Tsitsikamma | Oudtshoorn | After a stop in Knysna, we head inland, crossing the Outeniqua Mountains to Oudtshoorn. We head to the famous Cango caves to enjoy a guided tour of the formations that have formed in these impressive caves. |
| 18 | | Oudtshoorn | Barrydale | Before bidding farewell to the Klein Karoo, we stop to experience one fo Africa's most endearing creatures - the meerkat. We follow the scenic Route 62 and stop at the quirky country pub " Ronnies Sex Shop ". |
| 19 | | Barrydale | CAPE TOWN | Passing through some quaint Overberg villages, we reach the southernmost tip of the African continent, where the Atlantic and Indian oceans meet, Cape Agulhas. We will then drive along the beautiful Cape Whale Coast which is a pristine stretch on the South African coastline. We stop at the largest breeding colony of African Penguins, Stony Point Nature Reserve, before travelling along the coast to the city centre of Cape Town. |
| | 4 KRUGER & ESWATINI | | | |
| | 5 LESOTHO & GARDEN ROUTE | | | |

SUB TOUR OPTIONS

2 KRUGER, ESWATINI & LESOTHO

14 DAYS

Johannesburg to Gqeberha (PE)

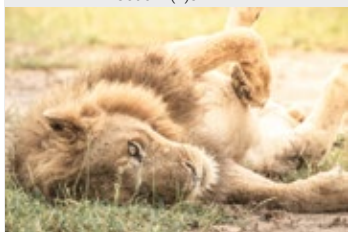
PRICE FROM:

AUD 2,915

AUD 4,000

AUD 4,540

Code: N(A)JP



3 THE GARDEN ROUTE

6 DAYS

Gqeberha (PE) to Cape Town

PRICE FROM:

AUD 1,405

AUD 1,990

AUD 2,100

Code: N(A)PC



4 KRUGER & ESWATINI

8 DAYS

Johannesburg to Durban

PRICE FROM:

AUD 1,940

AUD 3,045

AUD 3,085

Code: N(A)JD



5 LESOTHO & GARDEN ROUTE

12 DAYS

Durban to Cape Town

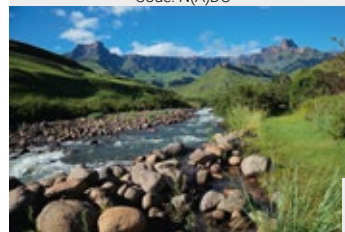
PRICE FROM:

AUD 2,555

AUD 3,255

AUD 3,740

Code: N(A)DC



14 DAYS KRUGER & MOZAMBIQUE

DIRECTION: Roundtrip

CODE: N(A)JMJ

Immerse yourself in our Kruger and Mozambique tour, a harmonious blend of wilderness and waves. Journey from the regal Eswatini Kingdom to the azure waters of Magaruque Island and Tofo, concluding with a safari amidst Kruger the National Park's bustling wildlife.

MEALS: Breakfast 13/Lunch 14/Dinner 13

COUNTRIES: South Africa, Eswatini & Mozambique

DEPARTURES: Monthly (Year Round)

| | | | | | | | | | | | |
|-----|-----|-----|-----|-----|-----|-----|-----|-----|-----|-----|-----|
| ✓ | ✓ | ✓ | ✓ | ✓ | ✓ | ✓ | ✓ | ✓ | ✓ | ✓ | ✓ |
| JAN | FEB | MAR | APR | MAY | JUN | JUL | AUG | SEP | OCT | NOV | DEC |

CORE ROUTE HIGHLIGHTS

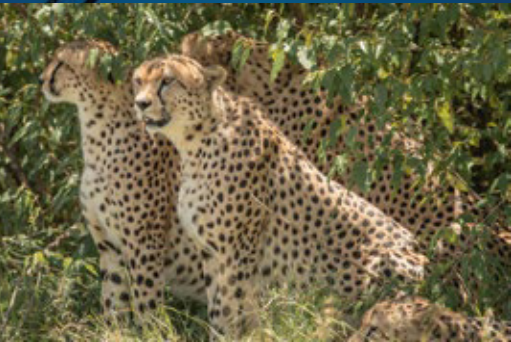
- ✓ 4 Safari/Nature Drives
- ✓ 4 Nature Walks/Hikes
- ✓ 1 Waterbased Activity
- ✓ 5 Landscape & Scenic Areas
- ✓ 4 National Parks & Reserves

PRICE FROM:

 **AUD 3,220**

 **AUD 3,970**

SINGLE SUPPLEMENTS APPLY





| DAY | TOUR | START | END | INCLUDED HIGHLIGHTS |
|-----|---|---------------------|---------------------|---|
| 1 | <div> <div>1</div> <div>2</div> <div>3</div> <div>4</div> <div>5</div> <div>6</div> <div>7</div> <div>8</div> <div>9</div> <div>10</div> <div>11</div> <div>12</div> <div>13</div> <div>14</div> </div> <div> <div>KRUGER & MOZAMBIQUE</div> <div>ESCAPE TO MOZAMBIQUE</div> </div> | JOHANNESBURG | Mlilwane NP | Today we enter the Kingdom of Eswatini, arriving at the Mlilwane Wildlife Sanctuary where we will spend the next 2 nights. This nature reserve is home to numerous animal species and diverse birdlife. |
| 2 | | Mlilwane NP | Mlilwane NP | This morning you will have the opportunity to explore a network of 9 trails that traverse Mlilwane with your guide. The afternoon will be spent at leisure. Mlilwane offers an array of activities and adventures in the Ezulwini Valley. |
| 3 | | Mlilwane NP | Hlane NP | We depart Mlilwane and head to another great reserve, Hlane Game Reserve. Our stay in Eswatini presents us with an opportunity to enjoy a game drive through the reserve. |
| 4 | | Hlane NP | Chidenguele | With the beaches of the Indian Ocean beckoning we enter Mozambique and make our first stop in Chidenguele, arriving in the late afternoon we have time for a walk on the beach or a sundowner to say 'Hello!' to the Indian Ocean. |
| 5 | | Chidenguele | Vilanculos | This morning we travel north to the coastal town of Vilanculos, which is renowned for idyllic white sandy beaches and azure waters. It's the gateway to the greater Bazaruto Archipelago, offering fantastic snorkeling, diving, and fishing. |
| 6 | | Vilanculos | Vilanculos | We board a traditional dhow this morning and set sail to the island of Magaruque. We spend the day exploring the island, snorkelling and enjoying the beaches of this island paradise. |
| 7 | | Vilanculos | Inhambane | Our journey takes us to the palm lined beaches of the Inhambane District for three days of relaxation and ocean fun. It's a gateway to diving hotspots like Tofo Beach, renowned for its whale shark and manta ray sightings. |
| 8 | | Inhambane | Inhambane | With three days of beach time we have an opportunity to relax and enjoy the warm waters of the Indian Ocean, the more adventurous can sign up for a variety of optional activities. |
| 9 | | Inhambane | Inhambane | We make the short drive to Tofo to spend the day enjoying yet another of Mozambique's iconic beach destination. With safe swimming, a charming market and a number of popular beach bars, Tofo is perfect for a day's outing. |
| 10 | | Inhambane | Maputo | With the beaches behind us, we enter Maputo, the capital city offers a vibrant and eclectic mix of cultures. |
| 11 | | MAPUTO | Kruger NP | Shaking the sand from our shoes, we pack up and depart Mozambique for the sounds of the bush of Kruger National Park, our home for the next three nights. On arrival you will enjoy a sunset gamedrive. |
| 12 | | Kruger NP | Kruger NP | Your full day 4x4 tour will take you in search of the Big 5, witnessing the daily lives of the animals that frequent Africa's biggest National Park. |
| 13 | | Kruger NP | Kruger NP | Explore the beautiful panoramic views and scenic waterfalls of the Blyde River Canyon, while enjoying the visual splendour of Bourke's Luck Potholes and God's Window on the Panorama Route. |
| 14 | | Kruger NP | JOHANNESBURG | After breakfast, we start our final journey back to the City of Gold where we bid farewell to our fellow travellers. |

SUB TOUR OPTIONS

2

ESCAPE TO MOZAMBIQUE

8 DAYS

Maputo to Maputo

PRICE FROM:

1

2

AUD 2,270

Code: NAMZ

WANT A PRIVATE GROUP?

Your style – Your Own Pace – Your Group

Have you considered a tailor-made group tour. Customised to your preferences.

Our 16 Day Mozambique Route:

Camping From:

8 Guests PRICE ON REQUEST

24 Guests PRICE ON REQUEST

Accommodated From:

8 Guests PRICE ON REQUEST

24 Guests PRICE ON REQUEST

✉

info@benchafrica.com.au



SINGLE SUPPLEMENTS APPLY

8 DAYS OKAVANGO & CHOBE TRAIL

DIRECTION: North/Southbound

CODE: N(A)JV or N(A)VJ

Embark on an 8-day journey starting in Johannesburg, through the tranquil Okavango Delta and the untamed Khwai Conservation Area, a haven of natural beauty and biodiversity. Explore the mystical Salt Pans and the wildlife-rich Chobe National Park, culminating in the awe-inspiring spectacle of Victoria Falls.

MEALS: Breakfast 7/Lunch 7/Dinner 6

COUNTRIES: South Africa, Botswana & Zimbabwe

DEPARTURES: 3 Trips Per Month (Year Round)

✓

✓

✓

✓

✓

✓

✓

✓

✓

✓

✓

✓

JANFEBMARAPRMAYJUNJULAUGSEPOCTNOVDEC

CORE ROUTE HIGHLIGHTS

- ✓ 3 Safari/Nature Drives
- ✓ 2 Waterbased Activity
- ✓ 5 Landscape & Scenic Areas
- ✓ 4 National Parks & Reserves

PRICE FROM:

 AUD 2,950

 AUD 3,560

SINGLE SUPPLEMENTS APPLY



2

BOTSWANA HIGHLIGHTS

7 DAYS

Maun or Victoria Falls

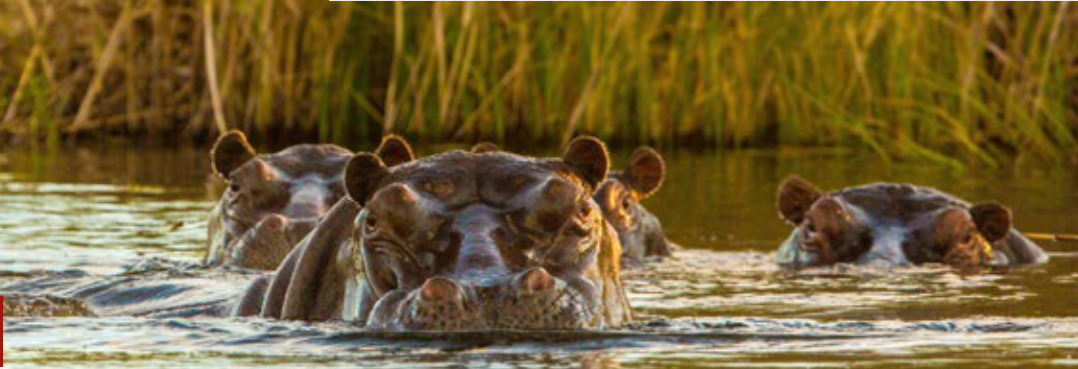
PRICE FROM:

 AUD 2,400

 AUD 3,050

Code: N(A)MV (N) / N(A)VM (S)

SINGLE SUPPLEMENTS APPLY



| DAY | TOUR | START | END | INCLUDED HIGHLIGHTS |
|-----|---|----------------|----------------|---|
| 1 | OKAVANGO & CHOBE TRAIL BOTSWANA HIGHLIGHTS | JOHANNESBURG | Palapye | We leave the City of Gold, Johannesburg, behind us as we head to the remote town of Palapye in the Kalahari. |
| 2 | | Palapye | Maun | Today we head north through the stark yet striking landscapes of the Central Kalahari desert towards Maun the gateway of the Okavango Delta. |
| 3 | | Maun | Khwai | You will be separated from your Nomad truck for the next 2 nights as we make our way towards the Okavango Delta and a sunset mokoro excursion. |
| 4 | | Khwai | Khwai | Today is a full day game drive in the Moremi Game Reserve. We traverse this wilderness area in our 4x4 vehicles through habitats from wetland, to the grasslands and Savannah woodland. |
| 5 | | Khwai | Nata | Today's journey from Khwai to Nata passes the Botswanan salt pans. The scenic drive from to Nata showcases some of Botswana's breathtaking landscapes and rich cultural heritage. |
| 6 | | Nata | Kasane | We journey from Kalahari sands to Kasane to explore the Chobe National Park from the river, enjoying a boat cruise which brings us up-close and personal with Chobe's wildlife. |
| 7 | | Kasane | Victoria Falls | Visit the awe-inspiring Victoria Falls, where the waters of the mighty Zambezi plummet into a gorge over 100m below and visit the rainforest with its many unique species. |
| 8 | 1 2 | Victoria Falls | VICTORIA FALLS | End your Nomad adventure by participating in the numerous optional activities on offer. |

12 DAYS NAMIBIAN EXPLORER

DIRECTION: Round Trip

CODE: N(A)WW

In this realm of boundless expanses, captivating vistas, and infinite marvels, the desert thrives with hidden life. Tiny lizards blend into the fiery red dune slopes, while the night sky bursts with stars, untouched by city glare. Here, in the whisper of true silence, your soul finds the perfect sanctuary to rejuvenate.

MEALS: Breakfast 11/Lunch 12/Dinner 11

COUNTRIES: Namibia

DEPARTURES: Monthly Fridays (Year Round)

✓

JAN

✓

FEB

✓

MAR

✓

APR

✓

MAY

✓

JUN

✓

JUL

✓

AUG

✓

SEP

✓

OCT

✓

NOV

✓

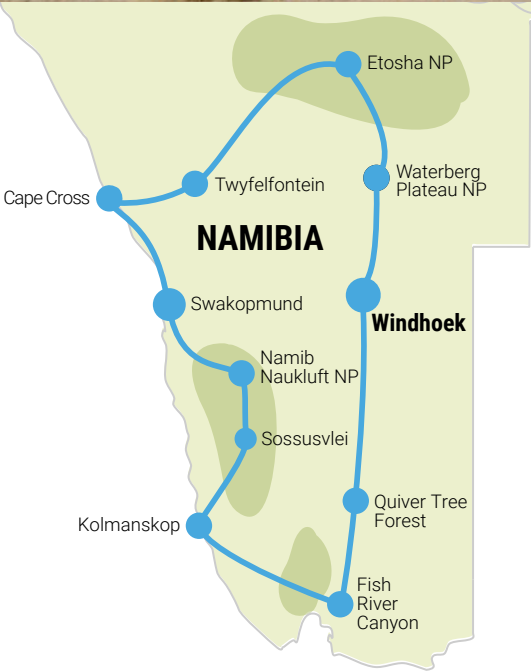
DEC

CORE ROUTE HIGHLIGHTS

- ✓ 5 Safari/Nature Drives
- ✓ 7 Nature Walks/Hikes
- ✓ 7 Landscapes & Scenic Areas
- ✓ 7 National Parks & Reserves

PRICE FROM:
 **AUD 3,300**
 **AUD 3,970**

SINGLE SUPPLEMENTS APPLY



CAMPING OR
ACCOMMODATED




20 SEATER

| DAY | TOUR | START | END | INCLUDED HIGHLIGHTS |
|------|-------------------|-------------------|-------------------|---|
| 1 | NAMIBIAN EXPLORER | WINDHOEK | Keetmanshoop | We depart the Namibia capital and head south into the IlKaras Region and the town of Keetmanshoop. We spend the afternoon in awe of the famous Quiver Tree Forest and enjoy the sunset amongst the trees. |
| 2 | | Keetmanshoop | Ais Ais | An early departure sees us head to the Giant's Playground to explore the incredible rock formations before we reach our overnight stop in Ais-Ais. |
| 3 | | Ais Ais | Luderitz | An early morning walk along the Fish River Canyon (largest in Africa) is an unforgettable experience before we head to the seaside town of Luderitz. |
| 4 | | Luderitz | Namib Naukluft NP | Our journey takes us through one of the most fabled places in Namibia, the old abandoned ghost town of Kolmanskop. |
| 5 | | Namib Naukluft NP | Namib Naukluft NP | A slow ascent up Dune 45 affords the perfect vantage point to marvel at a desert sunrise before exploring the white pans of Deadvlei and Sossusvlei. |
| 6 | | Namib Naukluft NP | Swakopmund | Today we head for Swakopmund. On route, we will see one of the oldest living plants (Welwitschia) and get to experience the Lunar Landscape. |
| 7 | | Swakopmund | Skeleton Coast | Our exploration of the desert begins with a trip to the fabled Skeleton Coast National Park and experience the large Seal Colony at Cape Cross. |
| 8 | | Skeleton Coast | Twyfelfontein | Leaving the coast today we will explore the Twyfelfontein rock engravings and the ancient petrified forest of the Kunene region. |
| 9-10 | | Twyfelfontein | Etosha NP | Surrounded by golden grassy plains, we enter Etosha National Park known for one of the most unique game viewing experiences in Africa. On day 10, get ready to enjoy a full day of exploration in the park. |
| 11 | | Etosha NP | Waterberg Plateau | A morning gamedrive sees us leaving Etosha for the Waterberg Plateau National Park, where we'll enjoy an afternoon walk with our guide. |
| 12 | | Waterberg Plateau | WINDHOEK | After a leisurely breakfast, we hit the road and return to Namibia's capital Windhoek where the tour will conclude. |

WANT A PRIVATE TOUR?

- Private Guided Group (Truck)**
8 guests to 20 guests
- Private Guided (4x4 Vehicle)**
2 guests to 4 guests
- Self Drive (4x4 Vehicle)**
2 guests to 4 guests

PRICE ON REQUEST

SINGLE SUPPLEMENTS APPLY
 info@bencanafrica.com.au

6 DAYS BEST OF ZIMBABWE

DIRECTION: South

CODE: N(A)ZZ

Experience an unforgettable journey! A land rich with natural and cultural treasures. From the powerful Victoria Falls to the captivating wildlife safaris filled with diverse species, the experience is nothing short of magical. Explore the mysterious Great Zimbabwe ruins and enjoy the country's breathtaking landscapes, all set against a backdrop of awe-inspiring rock sculptures.

MEALS: Breakfast 5/Lunch 6/Dinner 5

COUNTRIES: Zimbabwe & South Africa

DEPARTURES: Bi-monthly (Year Round)

✓

✓

✓

✓

✓

✓

✓

✓

✓

✓

✓

✓

JANFEBMARAPRMAYJUNJULAUGSEPNOVDEC

CORE ROUTE HIGHLIGHTS

- ✓ 2 Safari/Nature Drives
- ✓ 2 Nature Walks/Hikes
- ✓ 4 Landscapes & Scenic Areas
- ✓ 3 National Parks & Reserves

PRICE FROM:

 AUD 2,230

 AUD 2,555

SINGLE SUPPLEMENTS APPLY

CAMPING OR
ACCOMMODATED



20 SEATER



| DAY | TOUR | START | END | INCLUDED HIGHLIGHTS |
|-----|------------------|----------------------|----------------------|---|
| 1 | BEST OF ZIMBABWE | VICTORIA FALLS | Hwange NP | We leave the rumble and adventure of Victoria Falls behind us as we make the journey south to Hwange National Park |
| 2 | | Hwange NP | Hwange NP | Home to the big-5, Hwange National Park also offers a wide variety of plains game and birdlife. We will spend the day game driving (in open 4x4 vehicles) in search of the animals. |
| 3 | | Hwange NP | Matopos NP | This afternoon will be spent exploring the Matopos National Park with a local guide. The park is well known for its rounded granite hills that surround it and for its rhino's. |
| 4 | | Matopos NP | Great Zimbabwe Ruins | Our journey today takes us to Masvingo and the Great Zimbabwe Ruins. This afternoon we will enjoy a guided walking tour of this historic site. |
| 5 | | Great Zimbabwe Ruins | Limpopo | Leaving the sites of Zimbabwe behind we cross the Limpopo River and enter South Africa. |
| 6 | | Limpopo | JOHANNESBURG | This morning we head south to Johannesburg and arrive in the late afternoon where our tour ends. |

4 DAYS

THE KRUGER

BIG 5

DIRECTION: Roundtrip

CODE: N(A)JJ

Experience a captivating four-day journey where comfort meets excitement. Explore the diverse landscapes of Kruger National Park from the vantage point of our custom, elevated truck and specially designed open 4x4 safari vehicle. Each element has been thoughtfully engineered to offer you the best opportunities for unforgettable wildlife sightings.

MEALS: Breakfast 3/Lunch 4/Dinner 3

COUNTRIES: South Africa

DEPARTURES: Weekly (Year Round)

✓

✓

✓

✓

✓

✓

✓

✓

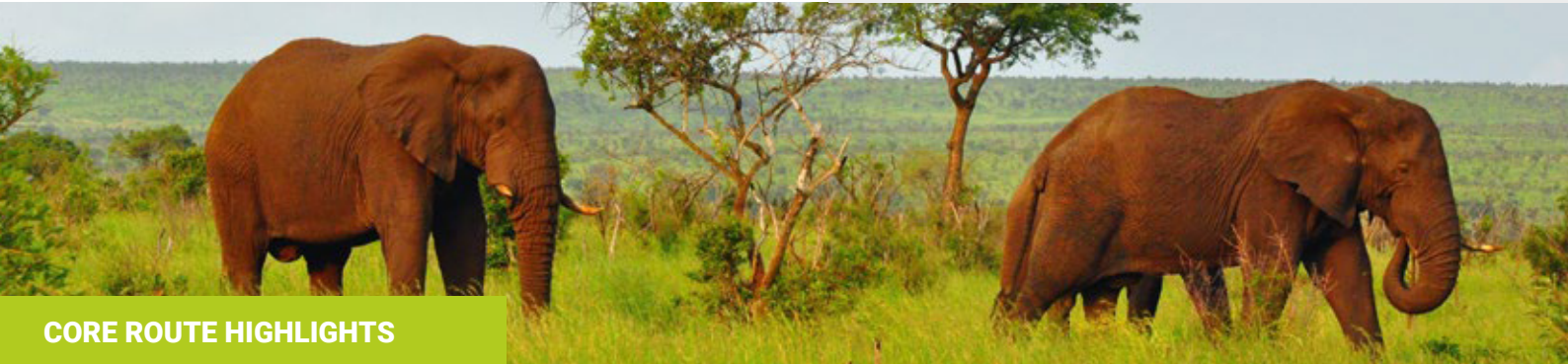
✓

✓

✓

✓

JANFEBMARAPRMAYJUNJULAUGSEPOCTNOVDEC



CORE ROUTE HIGHLIGHTS

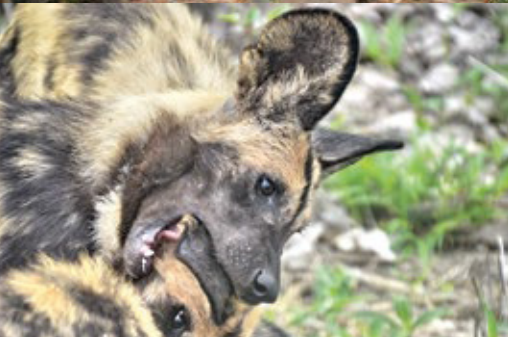
- ✓ 3 Safari/Nature Drives
- ✓ 1 Nature Walks/Hikes
- ✓ 4 Landscape & Scenic Areas
- ✓ 2 National Parks & Reserves

PRICE FROM:


 AUD 1,355

 AUD 1,685


SINGLE SUPPLEMENTS APPLY



CAMPING OR
ACCOMMODATED



20 SEATER



Panorama Route

Kruger NP

Johannesburg

SOUTH AFRICA

| DAY | TOUR | START | END | INCLUDED HIGHLIGHTS |
|-----|--------------|----------------|----------------|--|
| 1 | KRUGER BIG 5 | JOHANNESBURG | Kruger NP | We leave Johannesburg behind and make our way east through the footsteps of the old trade-routes to the Kruger National Park, where we set up camp and enjoy a lovely sundowner drive. |
| 2 | | Kruger NP | Kruger NP | This morning we enter the Kruger National Park to enjoy a full-day of game viewing. The game drive offers the excitement of experiencing the park's wildlife from open-sided 4x4 vehicles. |
| 3 | | Kruger NP | Panorama Route | This morning we will journey along the scenic Panorama Route where we will visit God's Window, Bourke's Luck Potholes and the Three Rondavels. |
| 4 | | Panorama Route | JOHANNESBURG | We enjoy our last drive through the park before setting off for Johannesburg. We arrive in the late afternoon where your tour ends upon arrival. |



22 DAYS VICTORIA FALLS TO NAIROBI

DIRECTION: North/Southbound

CODE: N(A)VN (N) or N(A)NV (S)

Journey from the magnificent Victoria Falls along the culture rich
Zambian roads. Then enjoy the enchanting white sands of Lake
Malawi and Zanzibar to the wildlife-rich plains of the Serengeti
National Park, crafting the perfect blend of coastal retreat and
pristine wilderness for an unforgettable East African experience.

MEALS: Breakfast 21/Lunch 21/Dinner 19

COUNTRIES: Zambia, Malawi, Tanzania & Kenya

DEPARTURES: Bi-monthly (Year Round)

| | | | | | | | | | | | |
|-----|-----|-----|-----|-----|-----|-----|-----|-----|-----|-----|-----|
| ✓ | ✓ | ✓ | ✓ | ✓ | ✓ | ✓ | ✓ | ✓ | ✓ | ✓ | ✓ |
| JAN | FEB | MAR | APR | MAY | JUN | JUL | AUG | SEP | OCT | NOV | DEC |

CORE ROUTE HIGHLIGHTS

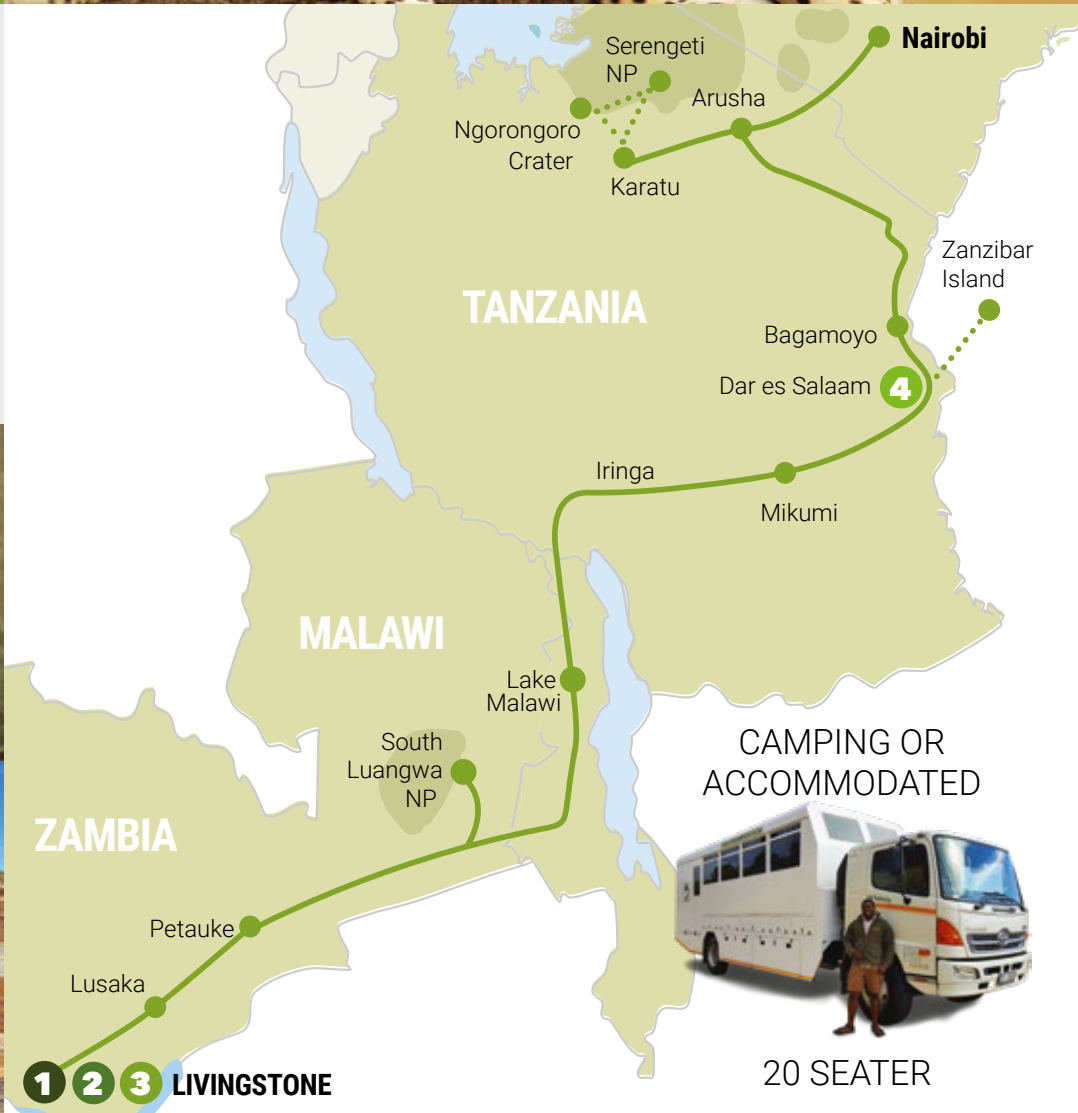
- ✓ 4 Safari/Nature Drives
- ✓ 3 Nature Walks/Hikes
- ✓ 5 Landmarks & Scenic Areas
- ✓ 4 National Parks & Reserves

PRICE FROM:

 **AUD 5,550**

 **AUD 6,925**

SINGLE SUPPLEMENTS APPLY





| DAY | TOUR | START | END | INCLUDED HIGHLIGHTS |
|-----|----------------------|----------------------|------------------|---|
| 1-2 | VIC FALLS & MALAWI | LIVINGSTONE | Chirundu | Setting off early from the Zambian side of Victoria Falls, we get our first impressions of East Africa through the window of our truck: colourful markets, busy villages and rural scenes form the backdrop of our Zambian journey. |
| 3 | | Chirundu | Petauke | This morning we drive through Zambia's busy capital Lusaka, before turning east towards Petauke, our destination for the night. We make a stop at Luangwa Market, a bustling hub where local Zambian vendors showcase their wares. |
| 4-5 | | Petauke | South Luangwa NP | Today we stop at the famous Mulberry Mongoose before our adventure in South Luangwa begins. Spend the morning relaxing at camp or doing a range of optionals in the park before your afternoon sunset safari begins. |
| 6 | | South Luangwa NP | Lake Malawi | This morning we set off for Malawi, the warm heart of Africa, where we will spend the next 3 days on the lake. |
| 7 | | Lake Malawi | Lake Malawi | Today is all about relaxing at the lake. With time set aside to unwind, read a book, soak up the sun or indulge in the many attractions and optional activities that are on offer. |
| 8 | | Lake Malawi | Lake Malawi | Today we travel alongside the lake to our camp in the North and enjoy a village walk with our Nomad guide in the afternoon. |
| 9 | | Lake Malawi | Mbeya | We depart north this morning, crossing the border into Tanzania heading for the Utengule Coffee Lodge. |
| 10 | | Mbeya | Iringa | Before heading to Iringa, we will make a stop at a local coffee plantation where we have the opportunity to see the process of growing and harvesting coffee beans and will be able to sample some of the beans. |
| 11 | | Iringa | Mikumi | This morning we complete our journey to the doorstep of Mikumi National Park. We have a quick stop at the Baobab Valley. Today you will have the opportunity to book a game drive in the Park. |
| 12 | | Mikumi | Dar es Salaam | We overnight in Dar es Salaam before an early start the following morning to catch our ferry to Zanzibar Island. |
| 13 | VIC FALLS & ZANZIBAR | DAR ES SALAAM | Zanzibar | We head out early to catch our ferry to Zanzibar Island where we will spend the next 3 nights. After arriving at the ferry port we make our way to our hotel located in Stone Town. |
| 14 | | Zanzibar | Zanzibar | Our morning begins with a walking tour of Stone Town to discover the more well known landmarks followed by a spice tour at a nearby farm. |
| 15 | | Zanzibar | Zanzibar | Today is a free day to enjoy some of the many attractions and activities on offer. Water sports are the order of the day. Whatever you choose, you will have ample opportunity to create some special island memories. |
| 16 | | Zanzibar | Bagamoyo | We bid farewell to the island and board our return ferry. On arrival back at the Dar es Salaam port, we reunite with our truck and head to Bagamoyo where we spend the night. |
| 17 | | Bagamoyo | Arusha | We travel across the northern reaches of Tanzania to the bustling town of Arusha. Northern Tanzania is home to the Serengeti, Ngorongoro and Kilimanjaro. |
| 18 | | Arusha | Karatu | We will spend most of the day commuting closer to the Ngorongoro Conservation Area to the town of Karatu. On route we will visit a small village, Mto wa Mbu, where you can sample red bananas and buy a shuka to take home. |
| 19 | | Karatu | Serengeti NP | We rise early and will be collected from our camp and transferred to the Ngorongoro Crater in 4x4 safari type vehicles. We will spend the morning exploring the crater floor in search of the animals which roam the plains. |
| 20 | | Serengeti NP | Serengeti NP | This morning we enjoy a full day game drive through Serengeti National Park. Famous for the abundant wildlife, we will spend the day in search of the animals. Pre booked optional Balloon Safaris are also possible this morning. |
| 21 | | Serengeti NP | Arusha | We depart camp having made some amazing memories, making the journey to Arusha, where we will spend the night reminiscing about our experiences of the Serengeti and Ngorongoro Crater. |
| 22 | | Arusha | NAIROBI | We cross the border into Kenya this morning and make our way to Nairobi where our journey ends on arrival. |

SUB TOUR OPTIONS

2 VIC FALLS & ZANZIBAR

16 DAYS

Livingstone or Dar es Salaam

PRICE FROM:

AUD 3,895

AUD 4,755

Code: N(A)VZ (N) / N(A)ZV (S)



3 VIC FALLS & MALAWI

13 DAYS

Livingstone or Dar es Salaam

PRICE FROM:

AUD 3,040

AUD 4,195

Code: N(A)VD (N) / N(A)DV (S)



4 ZANZIBAR & NGORONGORO CRATER

10 DAYS

Dar es Salaam or Nairobi

PRICE FROM:

AUD 3,595

AUD 4,025

Code: N(A)DN (N) / N(A)ND (S)



BUCKET LIST ACTIVITY LOADING...

HOT AIR BALLOON EXCURSION

Enjoy an optional sunrise hot air balloon safari over the Serengeti plains.



15 DAYS MASAI MARA & GORILLAS

DIRECTION: Round Trip

CODE: N(A)MG

Begin your journey by marveling at the stunning vistas of the Great Rift Valley, where nature reveals its grandeur. Continue on to the Masai Mara National Park, where you can explore the expansive plains teeming with wildlife. Lastly, enjoy an intimate encounter with endangered mountain gorillas. Each experience contributes to a deeper understanding of this incredible continent.

MEALS: Breakfast 14/Lunch 15/Dinner 14

COUNTRIES: Kenya & Uganda

DEPARTURES: Bi-Monthly (Year Round)

| | | | | | | | | | | | |
|-----|-----|-----|-----|-----|-----|-----|-----|-----|-----|-----|-----|
| ✓ | ✓ | ✓ | ✓ | ✓ | ✓ | ✓ | ✓ | ✓ | ✓ | ✓ | ✓ |
| JAN | FEB | MAR | APR | MAY | JUN | JUL | AUG | SEP | OCT | NOV | DEC |

CORE ROUTE HIGHLIGHTS

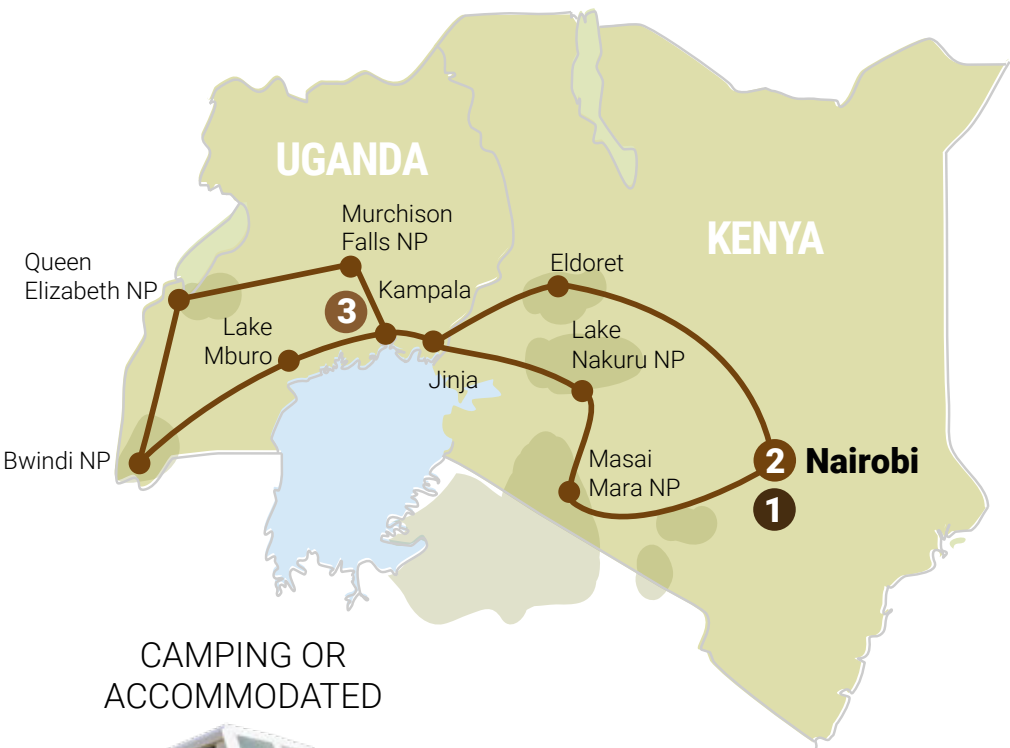
- ✓ 3 Safari/Nature Drives
- ✓ 4 Nature Walks/Hikes
- ✓ 2 Boat Cruises
- ✓ 5 Landscapes & Scenic Areas
- ✓ 5 National Parks & Reserves

PRICE FROM:

 **AUD 4,625**

 **AUD 5,155**

SINGLE SUPPLEMENTS APPLY



20 SEATER





| DAY | TOUR | START | END | INCLUDED HIGHLIGHTS |
|-------|--|----------------|----------------|--|
| 1 | 2 DISCOVER KENYA | NAIROBI | Masai Mara NP | Leaving Nairobi behind us, we head for the endless plains of the Masai Mara, renowned for its spectacular scenery and the Great Migration. |
| 2 | | Masai Mara NP | Masai Mara NP | The breathtaking vistas and abundant wildlife offer postcard opportunities for the avid photographer and wildlife enthusiast on our full day safari. |
| 3 | | Masai Mara NP | Lake Nakuru NP | Located on the floor of the Great Rift Valley, we explore the diversity and picturesque ridges of Lake Nakuru National park, home to the white rhino and endangered Rothschild Giraffe. |
| 4 | | Lake Nakuru NP | Jinja | A big day awaits as head into the adventure city of Jinja, famous as the point where the Nile flows out of Lake Victoria towards Egypt and the Mediterranean. |
| 5 | 3 MASAI MARA & GORILLAS GORILLA ENCOUNTER | KAMPALA | Masindi | The road takes us towards the fast growing dusty streets of Masindi on the outskirts of Murchison Falls National park, known as one of the best National Parks in Uganda |
| 6 | | Masindi | Masindi | Trekking through the Mahogany forests of Budongo Forest, view the chimpanzees in their natural habitat before taking a cruise on the Nile to Murchison Falls. |
| 7 | | Masindi | Lake Kikorongo | We depart Masindi and transfer towards the edges of the Queen Elizabeth National Park. Our accommodation for the night is nestled atop a hill overlooking Lake Kikorongo. |
| 8 | | Lake Kikorongo | Lake Bunyonyi | Crossing the equator once more, we travel to Lake Bunyonyi with its terraced hills, dotted islands and tranquil sound of birds. |
| 9 | | Lake Bunyonyi | Lake Bunyonyi | Trekking through the rain forests of the Bwindi National Park we encounter the endangered mountain gorilla in their natural habitat. |
| 10 | | Lake Bunyonyi | Lake Bunyonyi | Spend the day at leisure relaxing on the shores of Lake Bunyonyi or opt for an optional day tour to Rwanda or an additional day with the mountain gorillas. |
| 11 | | Lake Bunyonyi | Lake Mburo | Our next stop borders Lake Mburo NP, where we will enjoy an afternoon activity. |
| 12-13 | | Lake Mburo | Jinja | Today we cross the Equator, and look forward to the many optimal activities awaiting us in Jinja. Whether it's white river rafting, quad biking or bungee jumping, this city will delight the thrill seeker. |
| 14 | | Jinja | Eldoret | The Great Rift Valley is still a dominant geographical feature of the region around Eldoret, with rolling green farmlands and colourful tapestries. |
| 15 | | Eldoret | NAIROBI | Returning to Nairobi, we end our journey reflecting on the many memories made together. |



GORILLA PERMITS 750 - 850 USD PER PERSON FOR ONE DAY TREKKING

NOTE: KENYA PARKS SURCHARGE 100 - 250 USD PER PERSON PER DAY DEPENDING ON TRAVEL DATE

SUB TOUR OPTIONS

2
DISCOVER KENYA

4 DAYS

Nairobi to Nairobi

PRICE FROM:
AUD 2,215

Code: NAMN

3
GORILLA ENCOUNTER

8 DAYS

Kampala to Kampala

PRICE FROM:
AUD 2,250
AUD 2,765

Code: N(A)KK

DID YOU KNOW?

Eco-tourism is pivotal in maintaining protected areas for gorillas to thrive. Without gorilla trekking, the fate of these gorillas would likely be sealed by poachers. The management of these protective parks has been meticulous, especially in terms of facilitating interactions between tourists and the gorillas.

The Bwindi Impenetrable Forest is home to 18 habituated gorilla families. Each family is assigned one group of only 8 visitors daily. This structured approach ensures minimal disturbance to the gorillas' while encouraging a responsible form of tourism.

The economic impact is crucial too. The revenue from permits erves as a consistent income source for park rangers, enabling them to maintain the Bwindi Forest and shield the gorilla families from various threats. This symbiotic relationship between eco tourism and conservation efforts ensures not only the safety of the gorillas but also the preservation of the Bwindi Forest.

57 DAYS BEST OF AFRICA

DIRECTION: NORTH & SOUTHBOUND

CODE: N(A)CMG (N) & N(A)MGC (S)

Experience a journey of a lifetime with Africa's ultimate safari. The continent's awe-inspiring landscapes that form a breathtaking mosaic of nature's beauty. Witness the vibrant array of wildlife in their natural habitats and delve into the rich tapestry of indigenous cultures. This safari is more than just an adventure; it's a chance to curate unforgettable memories that will last a lifetime.

MEALS: Breakfast 53/Lunch 51/Dinner 48

COUNTRIES: South Africa, Namibia, Botswana, Zimbabwe, Zambia, Malawi, Tanzania, Kenya & Uganda

DEPARTURES: Bi-monthly (Year Round)

| | | | | | | | | | | | |
|-----|-----|-----|-----|-----|-----|-----|-----|-----|-----|-----|-----|
| ✓ | ✓ | ✓ | ✓ | ✓ | ✓ | ✓ | ✓ | ✓ | ✓ | ✓ | ✓ |
| JAN | FEB | MAR | APR | MAY | JUN | JUL | AUG | SEP | OCT | NOV | DEC |

CORE ROUTE HIGHLIGHTS

- ✓ 13 Safari/Nature Drives
- ✓ 13 Nature Walks/Hikes
- ✓ 5 Boat Cruises
- ✓ 17 Landscape & Scenic Areas
- ✓ 17 National Parks & Reserves

PRICE FROM:

 **AUD 14,945**

 **AUD 19,275**

SINGLE SUPPLEMENTS APPLY

CAMPING OR
ACCOMMODATED



20 SEATER



**1****BEST OF AFRICA****ITINERARY****ROUTE HIGHLIGHTS****3****CAPE TOWN TO ZANZIBAR****2****CAPE TOWN TO NAIROBI****START - CAPE TOWN, SOUTH AFRICA**

DAY 1 - 2 - Cederberg & Orange River

DAY 3 - Ai Ais Hot Springs

Day 4 - Fish River Canyon & Quiver Tree Forest

Day 5 - 6 - Namib Naukluft NP & Sossusvlei

DAY 7 - 8 - Swakopmund

DAY 9 - Twyfelfontein

DAY 10 - 12 - Etosha NP

DAY 13 - Kavango River

DAY 14 - 16 - Okavango Delta & Moremi Reserve

DAY 17 - Makgadikadi Pans

DAY 18 - Chobe NP

DAY 19 - 20 - Victoria Falls & LIVINGSTONE

DAY 21 - 22 - Lower Zambezi

DAY 23 - 25 - South Luangwa NP

DAY 26 - 28 - Lake Malawi

DAY 29 - 31 - Coffee Plantation & Mikumi

DAY 32 - DAR ES SALAAM

DAY 33 - 36 - ZANZIBAR

DAY 37 - 38 - Arusha & Karatu

DAY 39 - 41 - Serengeti NP & Ngorongoro Crater

DAY 42 - 44 - Masai Mara NP

DAY 45 - Lake Nakuru NP

DAY 46 - Jinja

DAY 47 - Murchison Falls NP

DAY 48 - Budongo Forest Reserve - Chimp Trekking

DAY 49 - Queen Elizabeth National Park

DAY 50 - 52 - Lake Bunyonyi & Bwindi NP - Gorilla Trekking

DAY 53 - Lake Mburo

DAY 54 - 56 - Jinja & Eldoret

END - Nairobi, Kenya**6****ZANZIBAR TO THE GORILLAS****4****EAST AFRICA & GORILLAS****OTHER COMBO GROUP TOUR OPTIONS****2****CAPE TOWN TO NAIROBI****42 DAYS**

Cape Town to Nairobi

PRICE FROM: **AUD 10,215** **AUD 14,015**

Code: N(A)CN (N) / N(A)NC (S)

**3****CAPE TOWN TO ZANZIBAR****36 DAYS**

Cape Town to Zanzibar

PRICE FROM: **AUD 8,560** **AUD 11,845**

Code: N(A)CVZ (N) / N(A)ZVC (S)

**4****EAST AFRICA & GORILLAS****37 DAYS**

Livingstone to Nairobi

PRICE FROM: **AUD 10,280** **AUD 12,180**

Code: N(A)VMG (N) / N(A)MGV (S)

**5****ZANZIBAR TO THE GORILLAS****25 DAYS**

Zanzibar to Nairobi

PRICE FROM: **AUD 8,325** **AUD 9,285**

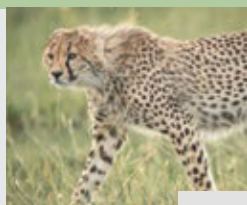
Code: N(A)ZMG (N) / N(A)MGZ (S)

**6****HIGHLIGHTS OF TANZANIA & KENYA****14 DAYS**

Dar es Salaam to Nairobi

PRICE FROM: **AUD 6,345**

Code: NANN

**SINGLE SUPPLEMENTS APPLY | GORILLA PERMITS 750 - 850 USD PER PERSON FOR ONE DAY TREKKING****NOTE: KENYA PARKS SURCHARGE 100 - 250 USD PER PERSON PER DAY DEPENDING ON TRAVEL DATE**

41 DAYS SOUTHERN CIRCLE

DIRECTION: ROUNDTRIP

CODE: N(A)CC

Merging our most iconic and popular tour experiences into a grand 41-day adventure through Southern Africa, this odyssey showcases a rich array of national parks, abundant wildlife, a variety of landscapes, and captivating cultural diversity. The journey takes you through six countries, each offering its own unique charm.

MEALS: Breakfast 41/Lunch 38/Dinner 37

COUNTRIES: South Africa, Eswatini, Lesotho, Namibia, Botswana & Zimbabwe

DEPARTURES: Monthly Year Round



JAN FEB MAR APR MAY JUN JUL AUG SEP OCT NOV DEC

CORE ROUTE HIGHLIGHTS

- ✓ 15 Safari/Nature Drives
- ✓ 11 Nature Walks/Hikes
- ✓ 4 Boat Cruises
- ✓ 13 Landscapes & Scenic Areas
- ✓ 16 National Parks & Reserves

PRICE FROM:

AUD 9,020
AUD 12,465

SINGLE SUPPLEMENTS APPLY



CAMPING OR
ACCOMMODATED



20 SEATER



ROUTE HIGHLIGHTS



START - CAPE TOWN, SOUTH AFRICA

- DAY 1 - 2 - Cederberg & Orange River
- DAY 3 - Ai Ais Hot Springs
- Day 4 - Fish River Canyon & Quiver Tree Forest
- Day 5 - 6 - Namib Naukluft NP & Sossusvlei
- DAY 7 - 8 - Swakopmund
- DAY 9 - Twyfelfontein
- DAY 10 - 12 - Etosha NP
- DAY 13 - Kavango River
- DAY 14 - 16 - Okavango Delta & Moremi Reserve
- DAY 17 - Makgadikadi Pans
- DAY 18 - Chobe NP
- DAY 19 - 20 - VICTORIA FALLS
- DAY 21 - 22 - Victoria Falls to Johannesburg
- DAY 23 - 25 - Kruger NP & Panorama Route
- DAY 26 - 27 - Eswatini (Mlilwane NP)
- DAY 28 - 29 - Hluhluwe NP & Isimangaliso NP
- DAY 30 - 33 - Drakensberg & Lesotho
- DAY 34 - 36 - Valley of Desolation & Addo NP
- DAY 37 - 38 - Tsitsikamma NP
- DAY 39 - 40 - Cango Caves & Barrydale (Tour Ends Cape Town)
- DAY 21 - 22 - Hwange NP
- DAY 23 - Matopos NP
- DAY 24 - 25 - Great Zimbabwe Ruins & Limpopo
- DAY 21 - 23 - Victoria Falls to Johannesburg
- DAY 24 - 26 - Eswatini (Mlilwane NP)
- DAY 26 - 27 - Hlane NP & Chidenquele
- DAY 28 - 29 - Vilanculos (Magaruque Island)
- DAY 30 - 32 - Inhambane (Tofo & Barra Beach)
- DAY 33 - Maputo
- DAY 34 - 36 - Kruger NP
- DAY 21 - 22 - Victoria Falls to Johannesburg
- DAY 23 - 25 - Kruger NP & Panorama Route

END - JOHANNESBURG, SOUTH AFRICA

1 SOUTHERN CIRCLE

OTHER COMBO GROUP TOUR OPTIONS

2 CAPE TO VIC & MOZAMBIQUE 37 DAYS

Cape Town to Johannesburg

PRICE FROM:
 AUD 8,365
 AUD 11,540

Code: N(A)CVM



3 FOUR COUNTRY TREK 26 DAYS

Cape Town to Johannesburg

PRICE FROM:
 AUD 6,895
 AUD 9,645

Code: N(A)CVZJ

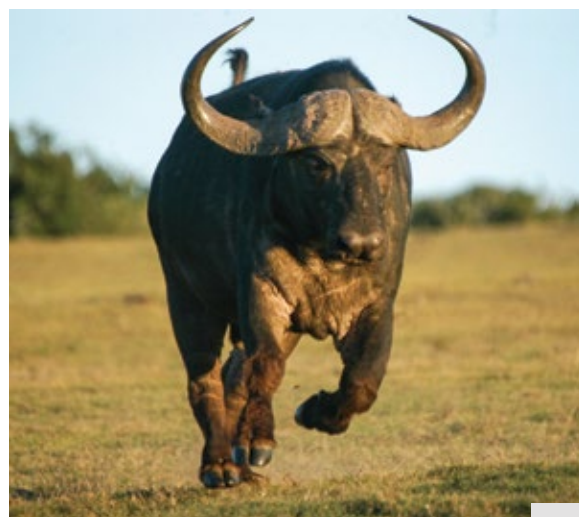


4 CAPE TO KRUGER 26 DAYS

Cape Town to Johannesburg

PRICE FROM:
 AUD 6,405
 AUD 9,160

Code: N(A)CVJ



SINGLE SUPPLEMENTS APPLY

OUR SOCIAL RESPONSIBILITY

OUR VISION IS THAT OF A LAND WHERE PEOPLE LIVE IN HARMONY WITH THE EARTH AND ALL THE CREATURES THAT LIVE UPON IT.

PEOPLE. PLACES.

ANIMALS.

The Nomad African Trust was established in 2008 by Alexander Rutherford, founder and owner of Nomad. In deciding how to proceed with the vision of the Trust we had to determine how we were going to approach the multitude of challenges facing Africa every day. We came up with these guiding principles: People, Places, Animals. To date we have been able to see positive results in our efforts and approach.



GREEN SEATS



SUITCASE PROJECT



PLEDGE A TREE



RESERVATIONS & ENQUIRIES

Southern Cross Safaris Australia PTY Ltd T/A Bench Africa
GPO Box 3435, Sydney, NSW 2001, Australia

WWW.BENCHAFRICA.COM

+1300 AFRICA (237 422)
+61 (0) 2 9290 2877
info@benchafrika.com.au

ATAS accreditation: #A10677 ABN 83 126 019 538